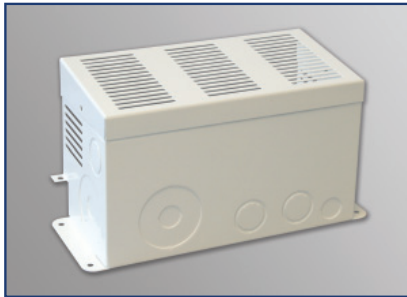


Accessories

Conduit Box



The ME-CB conduit box is designed to work with Magnum ME, MS, and RD Series Inverter/Chargers. It provides an enclosure for AC and/or DC wiring and has knockouts for ½”, ¾”, 1”, and 2” trade-size conduit. The ME-CB adds just over 5” (13 cm) to the length of the inverter.

MODEL NUMBERS

- ME-CB

WORKS WITH

- ME Series
- MS Series
- MS-AE Series
- RD Series
- RD-E Series

DC Load Disconnect

The DC Load Disconnect is a pigtail adapter designed to automatically turn off the inverter via a 12 volt DC disconnect switch.

MODEL NUMBERS

- ME-DCLD

WORKS WITH

- ME Series
- MS Series
- MS-AE Series
- RD Series
- RD-E Series

Fuse Blocks



Protection against costly damage: The ME-125F, ME-200F, ME-300F, and ME-400F protect the battery bank, inverter, and cables from damage caused by short circuits and overloads.

MODEL NUMBERS

- ME-125F
- ME-200F
- ME-300F
- ME-400F



Complete kit in one package: Magnum Energy fuses include a Slow-Blow high current fuse, a mounting block, and protective cover.

WORKS WITH

ME-125F and ME-200 only

- MM Series
- MM-AE Series
- MMS Series
- MM-E Series

ME-300F and ME-400F only

- ME Series
- MS Series
- MS-AE Series
- RD Series
- RD-E Series

Fuse Selection

Conductor Gauge	Current Capacity	Recommended Fuse Rating
4 AWG	125	125
1/0 AWG	200	200
2/0 AWG	290	300
3/0 AWG	310	300
4/0 AWG	360	400

Accessories

Ignition Switch Lockout

The Ignition Switch Lockout is a pigtail adapter designed to automatically turn off the inverter via a vehicle ignition switch.

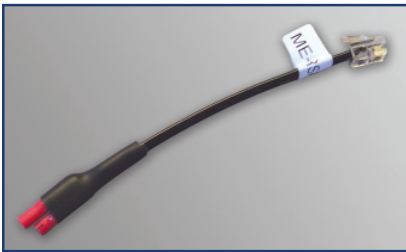
MODEL NUMBERS

- ME-ISW

WORKS WITH

- ME Series
- MS Series
- MS-AE Series
- RD Series
- RD-E Series

Remote Switch Adapter



The Remote Switch Adapter is a pigtail adapter designed to provide a simple on/off remote switch.

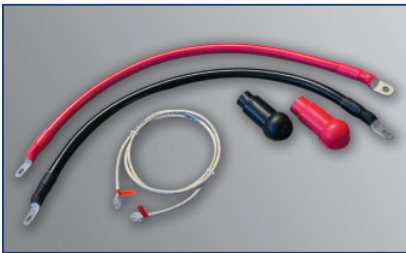
MODEL NUMBERS

- ME-RSA
(use SPST switch)
- ME-RSA-M
(use momentary switch)

WORKS WITH

- ME Series
- MS Series
- MS-AE Series
- RD Series
- RD-E Series

Series Stacking Cable Kit



The Series Stacking Cable Kit allows two inverters to be stacked together to achieve 120/240 VAC output. Series stacking is commonly used for well pumps, tools, motors, and other 240 VAC appliances. The kit includes communication cable, two 2/0 battery cables, and battery lug covers.

MODEL NUMBERS

- ME-SSI

WORKS WITH

- MS4024

